

# **Dell Wyse Windows 10 IoT Enterprise for Latitude 5280 Mobile Thin Client**

## **BIOS Upgrade Guide**



## Notes, cautions, and warnings

 **NOTE:** A NOTE indicates important information that helps you make better use of your product.

 **CAUTION:** A CAUTION indicates either potential damage to hardware or loss of data and tells you how to avoid the problem.

 **WARNING:** A WARNING indicates a potential for property damage, personal injury, or death.

**Copyright © 2017 Dell Inc. or its subsidiaries. All rights reserved.** Dell, EMC, and other trademarks are trademarks of Dell Inc. or its subsidiaries. Other trademarks may be trademarks of their respective owners.

# Contents

<b>1 Introduction.....</b>	<b>4</b>
<b>2 Upgrading the BIOS by using the WDM server.....</b>	<b>5</b>
<b>3 Upgrading the BIOS by using the SCCM server.....</b>	<b>9</b>
<b>4 Upgrading the BIOS by using the USB drive from the operating system.....</b>	<b>17</b>
<b>5 Upgrading the BIOS by using the USB drive through the BIOS boot menu.....</b>	<b>18</b>



# Introduction

This document provides the steps to update the BIOS on a Dell Wyse Windows 10 IoT Enterprise for Latitude 5280 mobile thin client. You can update the BIOS by using one of the following:

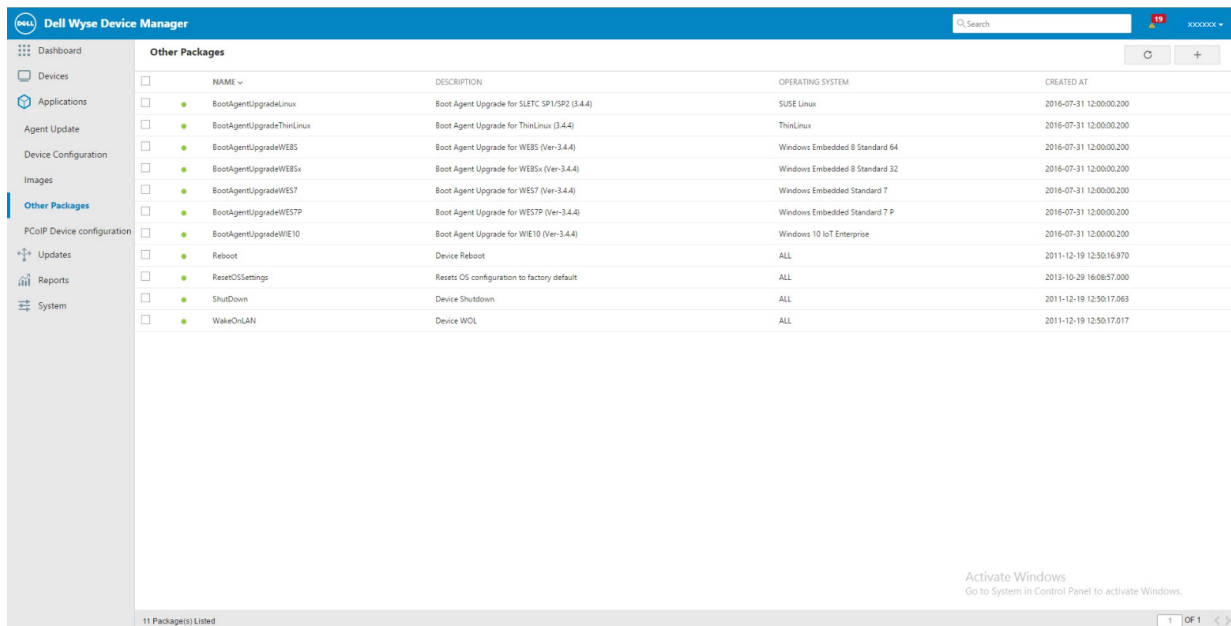
- Wyse Device Manager server
- System Center Configuration Manager (SCCM) server
- USB drive

**NOTE:** The build number of the BIOS is represented as 1.x.x. The value of x is not constant and changes with every update to the build. The build number displayed in the images is for reference only and the build number on your system may vary.

# Upgrading the BIOS by using the WDM server

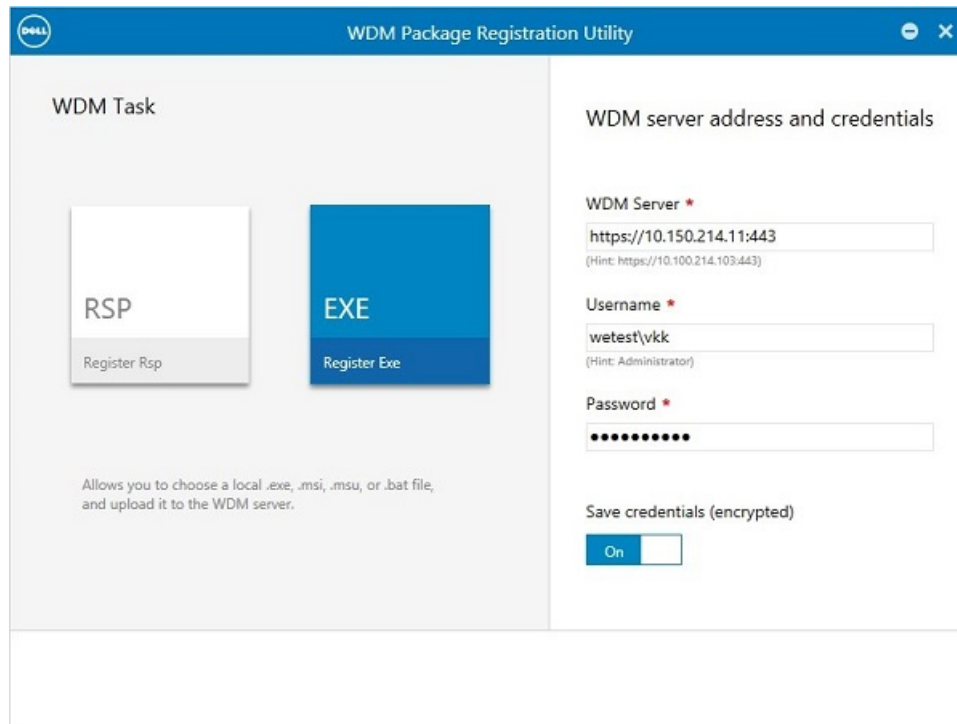
**NOTE:** Ensure that you are using WDM server setup v5.7.2 or later

- 1 Download the WDM BIOS package from [support.dell.com](http://support.dell.com).
- 2 Extract and store the file in your local repository or the WDM server.
- 3 Log in to the WDM server.
- 4 Click **Applications > Other Packages**, and then click the plus icon.  
The **Dell Wyse Device Manager** screen is displayed.



**Figure 1. Dell Wyse Device Manager**

- 5 Click **download**.
- 6 Double-click the downloaded package.  
The **WDM Package Registration Utility** screen is displayed.



**Figure 2. WDM Package Registration Utility**

- 7 Click **EXE** and navigate to the folder where the BIOS package is located.
  - 8 Select the target client operating system and enter the command line parameters `/s/1`.
  - 9 Click **Upload**.
- The BIOS package is registered under **Other Packages**
- The **EXE file selected** screen is displayed.

**WDM Package Registration Utility**

Select exe, msi, msu or bat to upload Browse

**Latitude\_5X80\_Precision\_3520\_1.4.3.exe**

Number	Latitude_5X80_Precision_3520_1.4.3
Description	Latitude_5X80_Precision_3520_1.4.3....
Operating System	WIE10
Category	Other Packages
Image Size	19661
Install Path	C:\Temp
Command Parameters	/s /r

Select Operating System \* Windows 10 IoT Enterprise

Install Path on Thin Client \* C:\Temp (Must be a valid path on Thin Client)

Command Parameters /s /r (Hint: some-file-name, or some-flag)

WDM server address and credentials

WDM Server \* https://10.100.214.103:443 (Hint: https://10.100.214.103:443)

Username \* Administrator (Hint: Administrator)

Password \* ••••••••

Save credentials (encrypted) On

Ready to upload Latitude\_5X80\_Precision\_3520\_1.4.3.exe Upload

**Figure 3. EXE file selected**

- 10 After the upload process is complete, close the window.  
The **Package details** screen is displayed

**Dell Wyse Device Manager**

Search

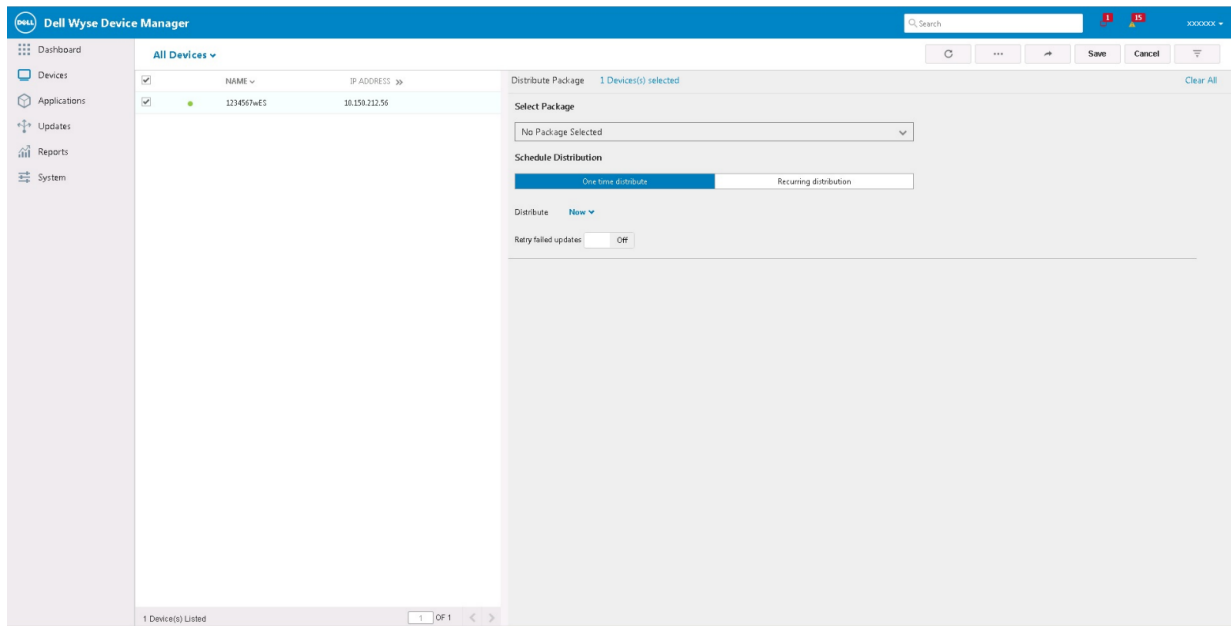
**Other Packages**

NAME	DESCRIPTION	OPERATING SYSTEM	CREATED AT
BootAgentUpgradeLinux	Boot Agent Upgrade for SLETC SP1/SP2 (3.4.4)	SUSE Linux	2016-07-31 12:00:00.200
BootAgentUpgradeThinLinux	Boot Agent Upgrade for ThinLinux (3.4.4)	ThinLinux	2016-07-31 12:00:00.200
BootAgentUpgradeWEBS	Boot Agent Upgrade for WEBS (Ver-3.4.4)	Windows Embedded 8 Standard 64	2016-07-31 12:00:00.200
BootAgentUpgradeWEBSi	Boot Agent Upgrade for WEBSi (Ver-3.4.4)	Windows Embedded 8 Standard 32	2016-07-31 12:00:00.200
BootAgentUpgradeWE37	Boot Agent Upgrade for WE37 (Ver-3.4.4)	Windows Embedded Standard 7	2016-07-31 12:00:00.200
BootAgentUpgradeWE37P	Boot Agent Upgrade for WE37P (Ver-3.4.4)	Windows Embedded Standard 7 P	2016-07-31 12:00:00.200
BootAgentUpgradeWE38	Boot Agent Upgrade for WE38 (Ver-3.4.4)	Windows 10 IoT Enterprise	2016-07-31 12:00:00.200
BootAgentUpgradeWE38_353	Boot Agent Upgrade for WE38 353	Windows 10 IoT Enterprise	2017-05-22 23:30:29.440
Latitude_5X80_Precision_3520_1.4.3	Latitude_5X80_Precision_3520_1.4.3.exe	Windows 10 IoT Enterprise	2017-06-12 02:45:57.980
Reboot	Device Reboot	ALL	2011-12-19 12:50:16.970
ResetOSSettings	Resets OS configuration to factory default	ALL	2011-12-19 16:08:57.080
ShutDown	Device Shutdown	ALL	2011-12-19 12:50:17.063
WakeOnLAN	Device WOL	ALL	2011-12-19 12:50:17.037

13 Package(s) Listed 1 OF 1

**Figure 4. Package details**

- 11 Click **Devices** and select the devices that require an update, and then click **Update**.  
The **Devices** screen is displayed

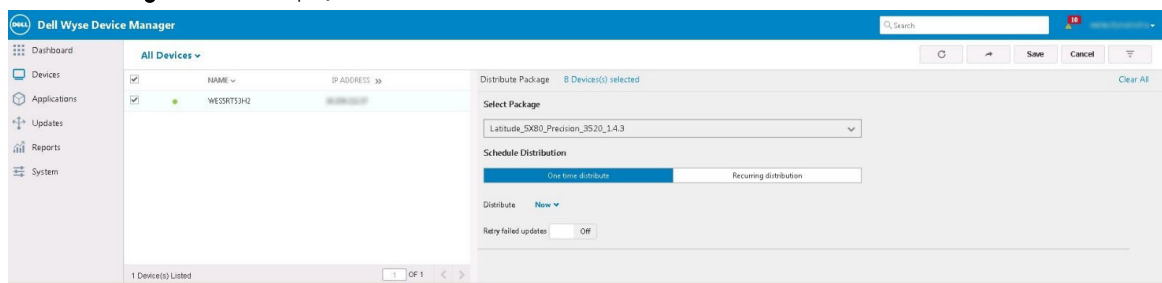


**Figure 5. Devices**

12 In **Select package**, click **Other Packages** and then select the registered BIOS package.

13 Click **Save**.

The **BIOS Flash Package** screen is displayed.



**Figure 6. BIOS Flash Package selected**

The client restarts and upgrades the BIOS.



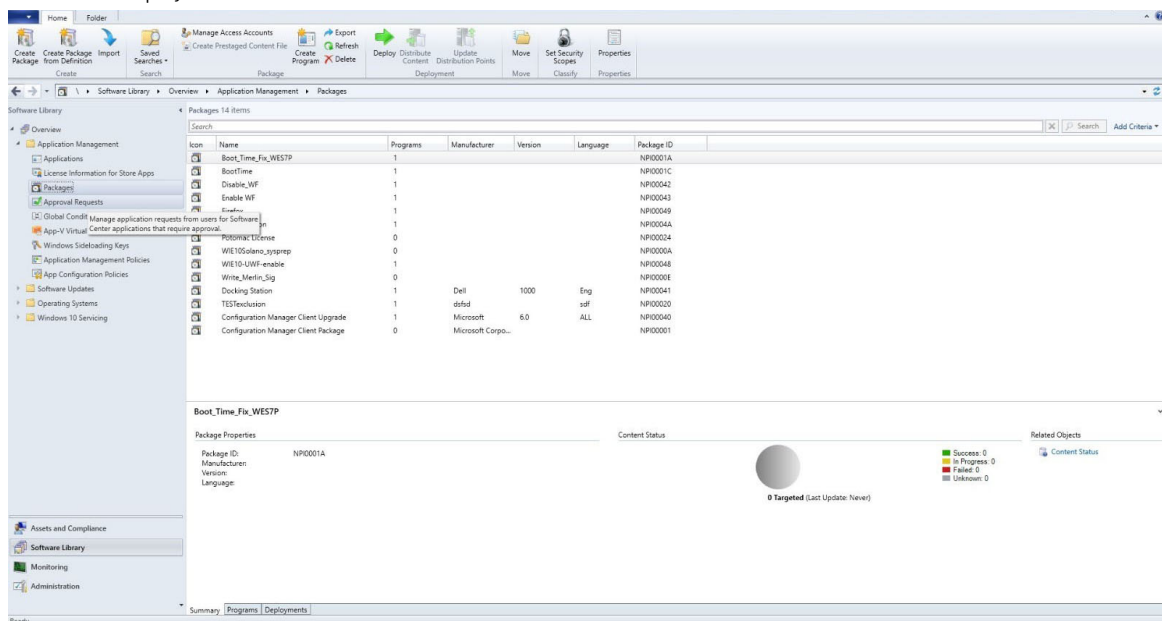
# Upgrading the BIOS by using the SCCM server

**NOTE:** Ensure that you use SCCM server 2016 R2 or later

To create a package, do the following:

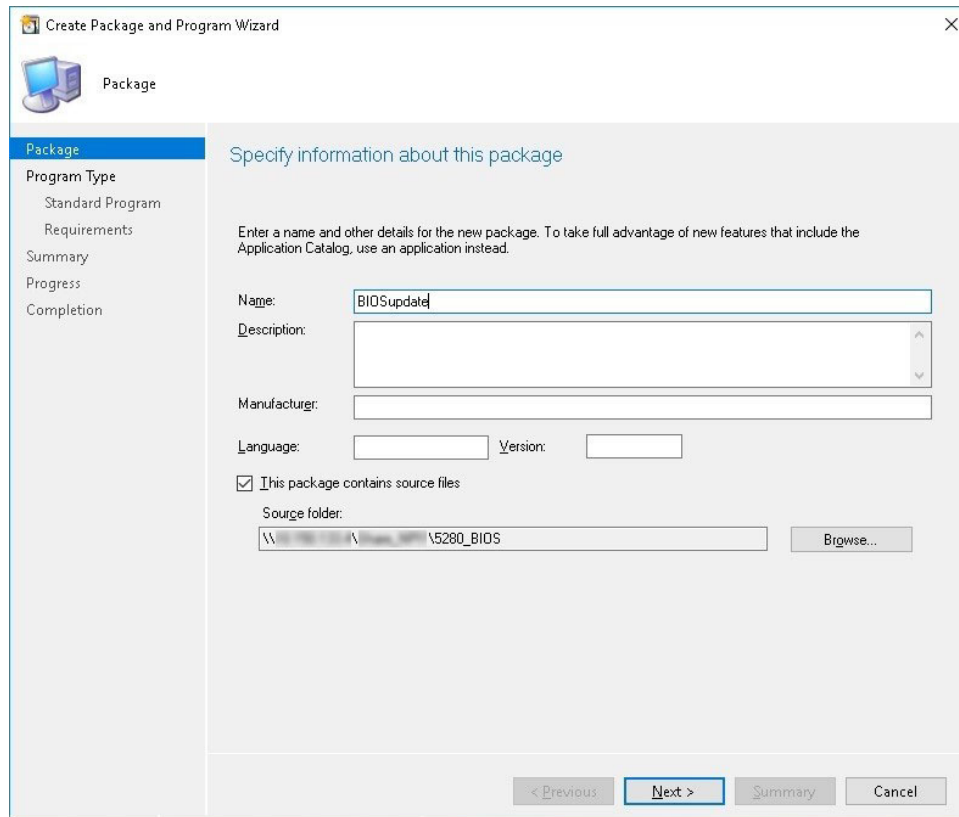
- 1 Download the WDM BIOS package from [support.dell.com](http://support.dell.com)
- 2 In **Configuration Manager Content Source Share**, create a folder with the name Packages.
- 3 Copy the installation package to the Packages folder.
- 4 Open the **System Centre Configuration Manager** console and go to **Software Library > Application Management > Packages**.
- 5 Click **Packages** and select **Create Package**.

The **WDM** screen is displayed.



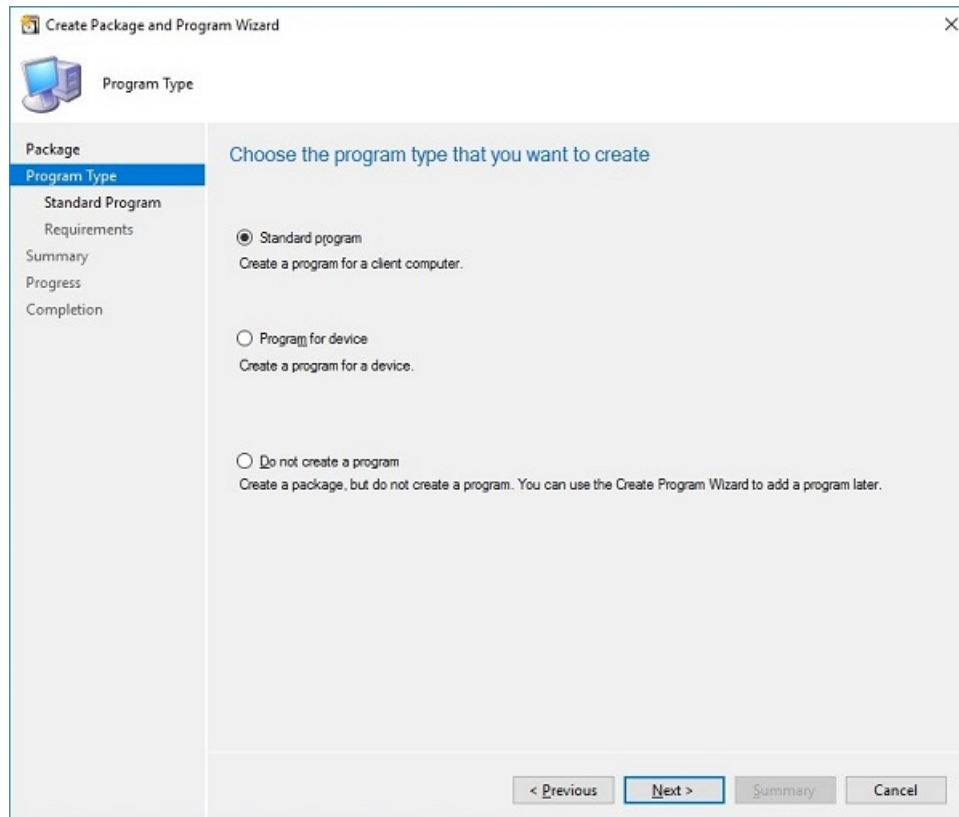
**Figure 7. WDM Interface**

The **Create Package and Program Wizard** screen is displayed.



**Figure 8. Create Package and Program Wizard**

- 6 Click **Next**.  
The **Program Type** screen is displayed.



**Figure 9. Program Type**

- 7 Select **Standard Program** and click **Next**.  
The **Standard Program** screen is displayed.

Create Package and Program Wizard

Standard Program

Package  
Program Type  
Standard Program  
Requirements  
Summary  
Progress  
Completion

Specify information about this standard program

Name: BIOSupdate

Command line: Latitude\_5x80\_Precision\_3520\_1.4.3.exe [Browse...](#)

Startup folder:

Run: Normal

Program can run: Only when a user is logged on

Run mode: Run with user's rights

☒ Allow users to view and interact with the program installation

Drive mode: Runs with UNC name

☐ Reconnect to distribution point at log on

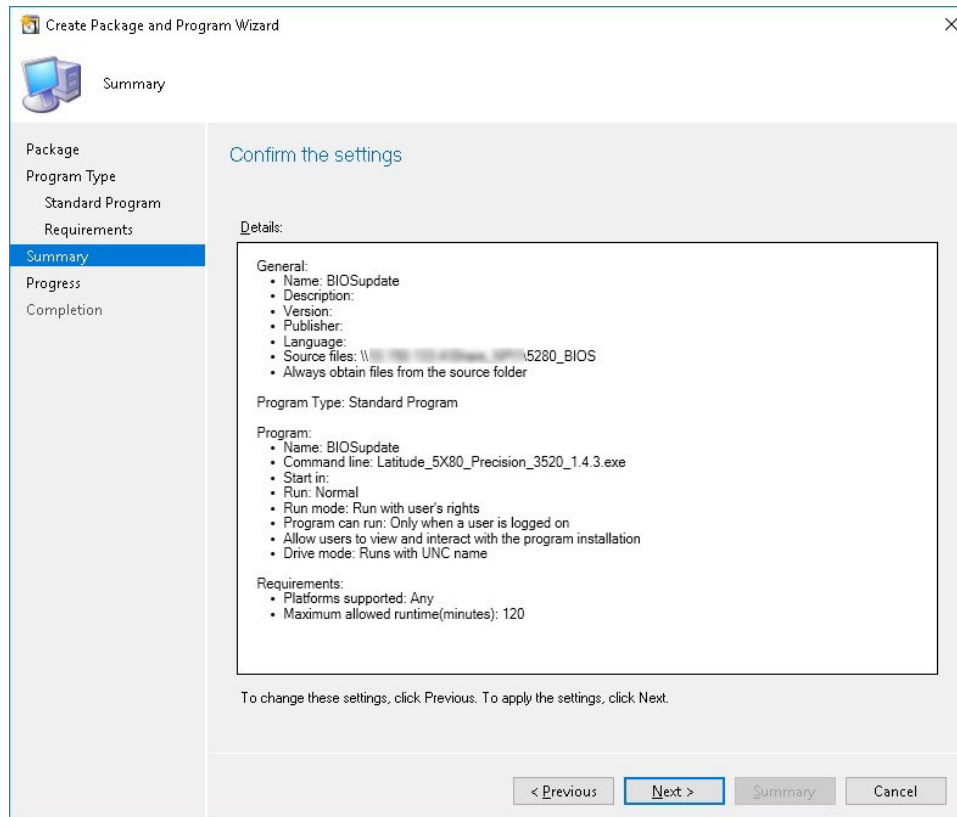
< Previous Next > Summary Cancel

**Figure 10. Standard Program**

- 8 In the **Standard Program** package, enter the package name.
- 9 In the **Command Line** field navigate to the folder where the BIOS executable file is located, and select it.
- 10 Click **Next** to continue.  
The **Requirements** screen is displayed.

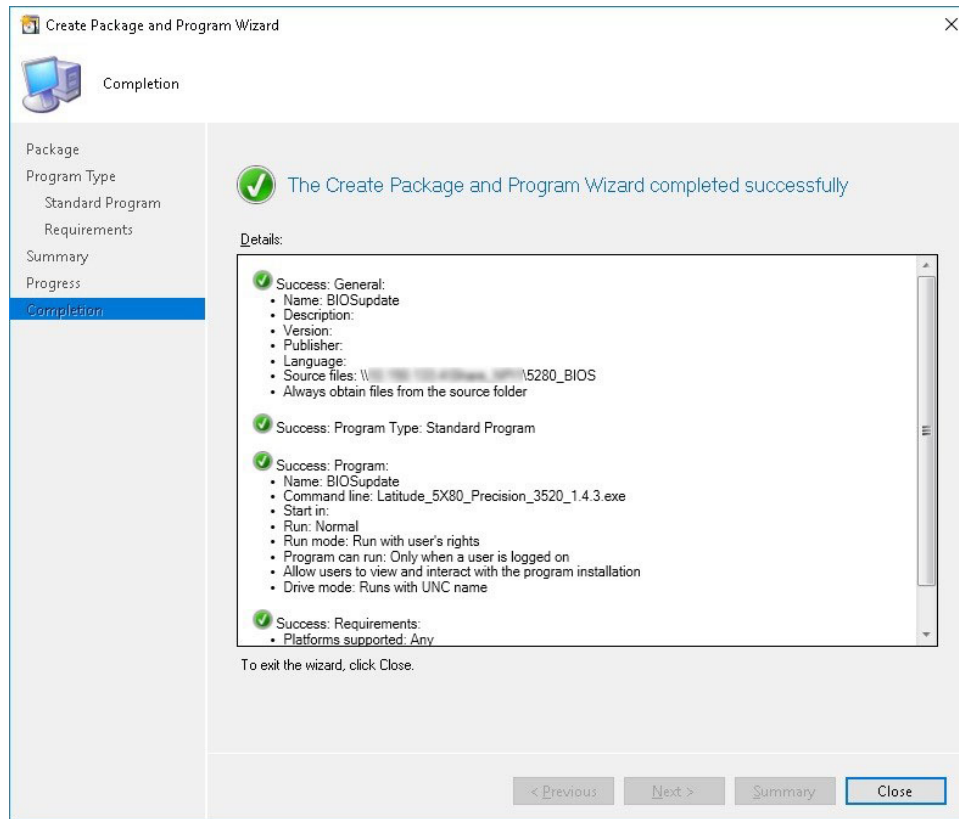
**Figure 11. Requirements**

- 11 Click **Next** to continue.  
The **Summary** screen is displayed.



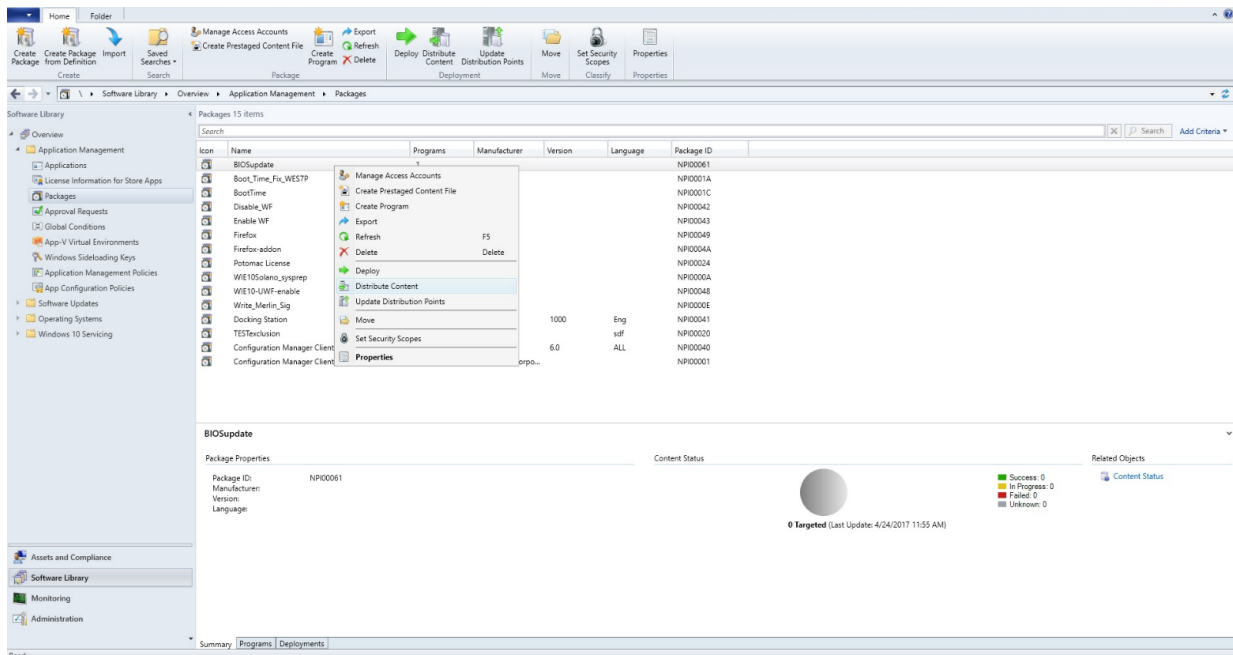
**Figure 12. Summary**

- 12 Verify whether all the information is correct.
- 13 Click **Next** to continue.  
The **Completion** screen is displayed.



**Figure 13. Completion**

- 14 Click **Close**.
- 15 Right-click the package created, and select **Distribute Content**.



**Figure 14. Distribute Content**

- 16 After the package content is distributed, check if the status of the package turns green.
- 17 Add the client to the domain and verify if it is displayed on the SCCM server screen.



- 18 In the target client where you want to upgrade the BIOS, go to **Assets and compliance > devices** and check the MAC id of the client. Add the device to the device collection.
- 19 Deploy the BIOS package to the created device collection.  
The client restarts and upgrades the BIOS.





# Upgrading the BIOS by using the USB drive from the operating system

To upgrade the BIOS by using the USB drive from the operating system, do the following:

- 1 Download the BIOS binary file to the thin client. The executable file can also be copied and run from a USB key.
- 2 Run the file.
- 3 Click **Ok**.

The client restarts and upgrades the BIOS.



## Upgrading the BIOS by using the USB drive through the BIOS boot menu

To upgrade the BIOS by using the USB drive through the BIOS boot menu, do the following:

- 1 Copy the downloaded executable file to a USB drive.
- 2 Plug-in the USB drive into any USB port.
- 3 Turn on the system.
- 4 On the Dell logo screen, press <F12> key to access the boot menu.
- 5 In **Other Options** select **BIOS Flash Update**.
- 6 Navigate to the downloaded executable file and click **Ok**.
- 7 Verify the existing system BIOS information and the BIOS update information.
- 8 Click **Begin Flash Update**.
- 9 After you review the warning message, click **Yes**.  
The client restarts and upgrades the BIOS.